

Greenway route for Old Goods Yard?

Campbell Allan, the developers for the Old Goods Yard (adjacent to Montpelier Station), have gone into receivership. Meanwhile, the preferred use of the site is being considered by Bristol City Council in the preparation of the Bristol Local Plan.

It may be allocated as a 'greenway route' with potential for public open space.

Watch this space!

Following consultation between Bristol and Avon councillors and Montpelier Traffic Group, proposals for 2 road closures in Montpelier have been put in for consideration by Avon - see back page.

NUMBERS TO NOTE

Montpelier Conservation Group:

Avon County Council, Avon House, St James Barton, 290777. For community leisure, education, highways and transport, social services. Your Avon Councillor: David John, 144 Richmond Road, Montpelier, tel 248961.

Bristol City Council

For drains, pavements (except re cable TV), street lighting: City Engineer, Brunel House, St George's Road, BS1 5UY, tel 223838.

For noise pollution: Environmental Health, Ashley House, 98 Grosvenor Road, BS2 8YE.

For street cleansing, refuse collection: Eastville depot, tel 510401. Bulky domestic items or items dumped in the street will be collected for free if you ring 510401 for a special collection.

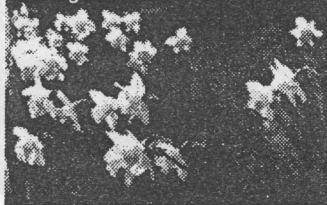
Your Bristol Councillors: Dave Sutton, 39 Ashley Hill, tel 554114, and Haroon Saad, 156 Richmond Road, Montpelier, tel 247490.

Cable TV contractors: United Artists on 612290 if you wish to call about pavement damage..

Police remove vehicles abandoned in the highway. Trinity Road Police Station, tel 267752. Your contact at Trinity Road Police Station is Supt Lockyer.

We would like to thank the retiring Chair of Montpelier Conservation Group after three years of dedicated work and Richard Hill, our community policeman, who has sadly been moved elsewhere. We welcome Haroon Saad as our new councillor and look forward to working with him.

We are grateful to The Groundwork Trust for letting us have 500 daffodil bulbs to plant. These have provided a wonderful display alongside Montpelier Station and at the bottom of 'Dangerous Hill'.



HAPPENINGS

January 26: Conference for local amenity societies in Avon. This was a day conference, organised by Bristol Civic Society, hopefully the first of many. Some groups, including MCG, were called upon to give a short presentation.

Cllr Andy May, Chair of Bristol Planning Committee, gave a talk about transport policies, which confirmed our fears about the problems the councils continue to face with under-investment from Central Government, the implications of privatising the buses, and the division of power between the city and county councils. However, there was hope as pollution and energy issues come more to the forefront.

During February, our community policeman arranged a day with local young people to clean up the litter at Montpelier Station. They also put in some new trees and shrubs.

May 11-19 is Environment Week - official.

May 20-June 3 Exhibition of Montpelier Photographs at Cheltenham Road Library.

September 13 approximately - the start of many weeks of construction for Cable TV in the Montpelier area. United Artists Communications state that: 'The City Council requires that, except where determined by the Highway authority, footway, driveway and carriageways will be reinstated with materials similar to those excavated'.

October 14-27: Yesterday's and Tomorrow's Bristol is an exhibition to be staged in the Brunel Old Station, Temple Meads. So far, 110 display boards have been booked by various groups. Montpelier will join with St Werburghs to show photographs of the area as it was and MCG will illustrate ideas of how it could develop in the future.

Not much happening...

at the Old Metropole, Ashley Road

Uncertainty surrounds this uncompleted development of flats and shops. Both the developers and their funding bank are now in the hands of the Receiver and the City Council is currently examining the legal position on securing the upgrading of the newly-built first phase. The second, which included 22 flats, has been abandoned.

MONTPELIER - who cares?

Montpelier Conservation Group is concerned with local issues:

- ★ buildings, old and new ★ parks and footpaths
- ★ traffic ★ anything affecting the local environment!

Next Meeting: 3 June 1991. Cheltenham Road Library. 7.30pm.

Talk on: Conservation Policies in Bristol

Speakers: Alistair Brook and Chris Heath. Urban Design

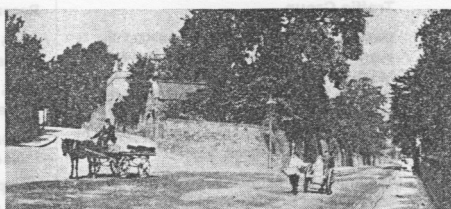
Officers with Bristol City Council.

Our AGM will take place after this talk - giving everyone a chance to take out or renew their membership! Just £2 a year covers monthly meetings and an occasional newsletter.

All welcome!

Pedestrian walkways disappear

The City Council has been alerted to the blocking of the two footpaths through the Ashley Hill Industrial Estate. Local people claim established use of rights of way and the industrial planning approval in 1978 showed wall openings for pedestrian access. These are particularly valuable in providing safer routes to and from St Werburghs schools and city farm and the Ashley Hill shops. Our picture shows the area in less hectic times.



M J Tozer Collection

LISTED BUILDINGS

If a building is listed by the Department of the Environment as having special architectural or historic interest it is listed in its entirety. This includes all external and internal features and any additional structures within the boundary and the garden walls. Listed Building Consent must be obtained for any alteration, improvement or extension. There are stringent penalties, including fines of up to £1000, for failing to do so. This includes satellite dishes. The City Council has recently removed one from a property in Ashley Road and will take enforcement action against owners of listed buildings who flout this regulation.

If you are unsure if your house is listed, contact either the City Planning Department or MCG.

CHARLEY BOX

The lock-up at 45 Picton Street, recently a café, has been given planning permission as a one-bedroom home. MCG preferred continuing use giving public access, but the planning committee decided they could not oppose it though they agreed it was a pity people would no have easy access to it.

The police have arranged for a plaque to explain the lock-up's original use.

The lock-up was recently listed, as was Picton House.

History Notebook: Chapter One

The name Montpelier, derived from the French resort, describes a health-giving place which has splendid views. It has been suggested that French sailors, imprisoned at Stapleton in the 1770s, referred to it as such because its situation and the recreations offered by Rennison's Baths & Pleasure Grounds reminded them of their own Montpelier. Whatever its origin, the name was certainly in common use before 1793 when Matthews Street Directory recommended Montpelier as a place from which to obtain fine views of Bristol.

Its earlier name was Ashley (Anglo-Saxon Asseley, meaning ash-glade or clearing) and it was part of the lands given to the Benedictine Priory of St James by the Earl of Gloucester circa 1170.

After the Dissolution, Henry VIII sold the Priory and its lands to Henry Brayne, a London tailor. The Ashley Estate remained in that family until bought by Andrew Hooke, a brewer, in 1674. It comprised what is now the area of Montpelier north of Picton Street, St Werburghs and Ashley Down. The triangle bounded by Cheltenham Road, Bath Buildings, Wellington Avenue and Ashley Road, known as Apesherd, was sold separately. The whole area was in the Outparish of St James and the County of Gloucester. (It only became part of Bristol in 1832.) In the early 18th century, it was entirely rural, a mixture of cornfields, pasture land, gardens and orchards leased as smallholdings. There were only 2 substantial houses and some farmhouses, cottages and barns. Small settlements grew up around the water mills: Hooke's (at Sussex Place/Sevier Street), Cutlers (just south of Cheltenham Road Arches) and Territts (above the Health Centre).

Next issue: Ashley Manor House.

WORKING GROUPS Update

Traffic Group

Montpelier Traffic Group had a meeting on every third Monday of the month. However, it has become more relevant to include traffic issues in the Conservation Group meetings and the Traffic Group meetings will be on a more specific response basis after the AGM of the Conservation Group.

The two road closures which have gone in for consideration by Avon would affect Bath Buildings between the junctions with Richmond Road and York Road, and the part of Richmond Road between the junctions of Richmond Avenue and Fairfield Road.

The Traffic Group has also been turning its attention to the Spine Road and we now see that the Corporation Board has resolved to approve in principle the allocation of £250,000 for traffic calming measures in Brislington, Barton Hill and Ashley Down.

We are also keeping an eye on the Sussex Place/Lower Ashley Road proposals which have been at Avon for some time now. We are assured by Avon that there are no firm proposals at the moment and that a number of proposals will be prepared for public consultation, with a view to site works in the 1992/1993 financial year. Pedestrian and cyclist facilities will be incorporated. The former garage at No 2 Sussex Place is owned by Avon and they have promised to maintain it...

We have been working with the local community policeman to clear the area of dumped cars and also a major exercise to clear Brook Lane. Proposals were to be circulated in the near future for restricting parking on parts of roads where an obstruction is then caused. This particularly applies where vehicles are parked on both sides of a narrow road or near a corner and no emergency vehicle could hope to get through.

Buildings Group

With a review of the listing of buildings under way locally by English Heritage, the Buildings Group has been working hard to bring to the attention of their officers the omissions from this area at present.

LOCAL ISSUES Update

Recent approvals have been given for:

- 45 Picton Street - change of use to residential (see centre pages)
- 45 York Road - partial demolition to make building safe and felling of ash tree
- 198a Cheltenham Lane - change of use to Buddhist Centre
- 2 Picton Street - ground floor change of use to café
- 11 Montpelier Central: retrospective approval for car valet and car hire
- 116 York Road - felling of elder tree in rear garden
- 74 Stokes Croft - alteration of existing shop front

There are planning applications in for:

- 59 Richmond Road - conversion of flats to offices
- Rear of 121 Ashley Road (6 Brook Lane) enforcement notice appeal - change of use to car repairs, spraying, welding, body repairs, breaking up
- 120 Cheltenham Road - change of use to restaurant on ground and basement floors, with no provision for parking.

Proposed Residential Development on the allotments at Mina Road: there was much local opposition to this development and Bristol City Council had a policy objection. It was detailed for auction on 27 February but, when it was revealed that planning permission would not be granted for development, the lot failed to reach its reserve and was withdrawn.

Colston's Girls' School's appeal against the refusal to allow demolition of classrooms and the erection of new buildings was dismissed.

AGM

3 June 1991