

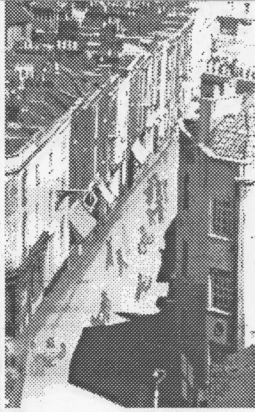
Montpelier on show

Montpelier Conservation Group has booked its stands at the 'Yesterday's and Tomorrow's Bristol' exhibition, alongside St Werburghs, Stokes Croft, St Paul's and other areas of Bristol and surrounds. The exhibition runs from 15 to 27 October 1991, 10 am to 9.30pm, at the Brunel Centre, Temple Meads. See leaflet inside.

YESTERDAY'S BRISTOL

Here's your chance see the past of the area - and inspiration for you to dig out any old photographs, documents or memorabilia which may be of interest for future exhibitions and publications.

We never keep original material, so it will be returned to you as soon as we have copied it or extracted information.



TOMORROW'S BRISTOL

Here's your chance to see ideas for the future from local residents (such as Picton Street in the picture).

Other ideas include making planning more local, putting empty buildings to good use and improvements in the environment.

We want to work on positive ideas for the future, and welcome suggestions - come along to a meeting.

Montpelier - who cares?

Montpelier Conservation Group is concerned with all local issues. We meet on the **first Monday** of every month at 7.30pm in Cheltenham Road Library.

We need more members - please come along!

Better Your Bristol '91

The 'Better Your Bristol' Scheme is run by Bristol Civic Society, who have recently awarded MCG £150 towards the costs of restoring the lamp at the top of St Andrews Road.

A Victorian masterpiece with two gas mantles, twin ladder supports and black-out stripping, the original top has been missing for many years. This photo was taken in 1951.



We are currently researching the life of E W Godwin, Bristol's most famous architect, and know he lived in Brighton Villa in Richmond Road in 1862. If you know where this is, please ring

RALLY TOGETHER

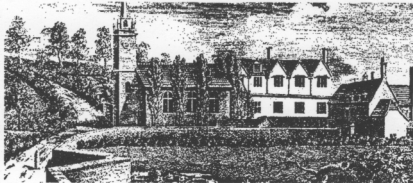
If you object to the blocking up of the access footpaths from Ashley Trading Estate to Ashley Hill, write to the City Planning Officer at Brunel House. Keep a copy for Dave Sutton, who is following this up with the various authorities.

MEET 8am MONDAY 14 OCTOBER AT THE SITE TO DEMONSTRATE AND TO PLAN FUTURE ACTION

We are also concerned about the lack of pedestrian crossings and public transport on Ashley Hill.

History Notebook: Chapter Two: Ashley Manor House

This Tudor house stood at the foot of Ashley Hill, behind Ivy Church, adjoining Hooke's Grist Mill. It is thought to have been built in the late 1500s, although unsubstantiated references to it as the Guest House of St James Priory would date it much earlier. Until the early 19th century, it was owned by prominent wealthy families. In 1791 it was leased to the Magdalen Charity to be used as a hospital for 'deluded common women who wish to reform'. It was re-leased to the Blue Maids Orphanage in 1795. They purchased it in 1825 but 4 years later moved to purpose-built premises further up Ashley Hill. They let the house, to the same Nurseryman for 48 years at one stage, but allowed it to deteriorate and demolished it in 1911.



Some drawings of the exterior survive and in 1908 a local historian carefully recorded the interior. The gables of the principal frontage were surmounted by carved stone finials, the oak mullioned windows retained their moulded drip-stones and the roof was crowned by a picturesque huddle of chimney stacks. The house contained a wealth of early woodwork, fine elaborate chimney-pieces, a ceiling with beautiful geometric strap-work panels and a handsome carved staircase. Although it was judged to have been substantially built and to be well worthy of repair, because of its 'unsalubrious' position no-one made the effort to save it.

It was stripped of its architectural features, some of which have become showpieces in other houses. The ceilings are in Nailsea Court and a fireplace and door are in Red Lodge. A local dealer offered £15 for the staircase but its destination is unrecorded. The other 2 fireplaces and 3 ancient panelled doors which were sold to the City Museum have disappeared.

Next issue: The Civil War

NOTICES

At the MCG meeting on 3 June this year, the speakers were 2 urban design officers from Bristol City Council and it was well attended. We raised issues which concerned us, such as our dissatisfaction with the standard of design in new buildings in the area, the use of UPVC windows, the importance of enforcement and the need for local planning applications to be available locally. The proposals for 67 Ashley Road are a case in point.

With this issue MCG begins taking advertising via business membership to subsidise newsletter printing costs while giving local businesses a chance to be known throughout Montpelier! In this introductory offer, business membership includes **one 1/8th page advert** in every issue for the rest of our year for just £5.

Neighbourhood News Correspondents are required in this area for the Evening Post. Contact them at Temple Way.

**RELAX OUTDOORS
WITHOUT THE CHORES!
SMALL WORLD
GARDEN SERVICES**

From a general tidy-up to design and construction.
Specialising in low maintenance.



2 PICTON STREET
Lunches, brunches,
coffee and tea
BRISTOLIAN
INTERESTING EXHIBITIONS

HAPPENINGS

The Old Gaol plaque unveiling happened one summer evening at the instigation of the police. Picton Street was closed and a large crowd enjoyed milling around in it, seeing inside the gaol etc. Thanks to the Bristolian Café for the splendid food afterwards, and to the brownies for serving it.



The Spine Road inquiry went on during June and July. As non-statutory objectors, we took the chance to speak during it. The result should be known in the autumn.

Cable TV in the area - the City Council requires that, except where determined by the Highway Authority, footway, driveway and carriageways will be reinstated with materials similar to those excavated. Telephone UA on 0454 612290 if you wish to call about pavement damage etc.

A Historical Walk took place in the evening on August 20 when Bristol YHA Group were conducted around Montpelier and St Werburghs. It was well-received and we would like to do more next year: if you know a group who may be interested, ring!

Exhibitions about Montpelier have been held at Cheltenham Road Library, The Bristolian, The Spine Road Inquiry and The Waterside Flower Show. If you are interested for any other venues, contact

Still not much happening at...the Metropole, Westmoreland House, 'Old Full Marks' corner site and the Station.

RICHMOND SECURITY SERVICES
INSTANT CALL OUT FOR ALL LOCK REPAIRS AND BURGLAR DAMAGE
WE SELL ALL SECURITY PRODUCTS CHUBB YALE INGERSOLL
SECURITY BARS & BOLTS
46 RICHMOND RD MONTPELIER

PLANNING Update

Approvals have been given for:

- Lloyds Bowmaker, 80 Stokes Croft - boundary wall, planting, grasscrete car parking, felling of silver birch, wall and railings along frontage
- 2 Stokes Croft - from tyre service to night club and restaurant
- Mina Road Craft Workshops
- Tropic Club - removal of lantern lights over billiard room
- 115 Lower Cheltenham Place - demolish and rebuild bathroom at rear
- 151 Lower Cheltenham Place - 2 storey rear extension
- 17 Picton Street - 2-storey rear extension
- 140/142 Cheltenham Road - 1st and 2nd floors from 18-person hostel to 6-bedroom maisonette
- 120 Cheltenham Road - from club to restaurant in ground floor and basement
- 37 Picton Street - workshop demolition
- 142 Ashley Road (part) - estate agents to dental surgery
- 126 Ashley Road - shop renovation and 3 dwellings
- 19 Sussex Place - convert to single house

Refusals have been given for:

- 59 Richmond Road - conversion to offices
- 64 Cobourg Road - loft conversion, terrace

Deferment has been given for:

- Colston's Girls' School - new classrooms and multi-purpose hall

Keep in the picture!

- Montpelier Conservation Group meets on the first Monday of every month.
- We are also in contact with:
 - The Triangle Association
 - Fairfield Residents' Association
 - St Andrews Traffic Group
 - Armidale Cottages Tenants Association
 - Parkway Local Environmental Action

Compulsory purchase is under way for:

- 5 Cobourg Road

There are planning applications in for:

- Corner plot at Tudor Road/Lower Ashley Road - car park
- 67 Ashley Road (Hurley House site) - demolish garage plus new building of 6 flats and 1 bedsit
- 4 Fairlawn Road - rebuild garage and make house into 2 flats
- 133/135 Ashley Road - demolition of coachhouses
- 133 Lower Cheltenham Place - demolish
- 4/10 Stokes Croft - from shop to taxi control
- 125 Richmond Road - felling willow tree
- 117 Richmond Road - replacement of roof
- 140/142 Cheltenham Road - use of mezzanine to restaurant, deletion of condition re hours
- 82 Ashley Road - from offices to nunnery
- St Werburghs Church - freestanding climbing structure and viewing gallery
- Rear of 121 Ashley Road - light commercial storage, lock-up
- 45 York Road - demolish and rebuild
- 152 Ashley Road - from butcher to hot food take-away

Whilst we endeavour to be accurate at the time of going to press, we cannot guarantee it and recommend checking details at Bristol Planning Department.

If you are concerned about noise or unauthorised use of buildings or roadways, your case will be strengthened if you present a diary, pictures etc over a few months as evidence.

RICHMOND BUILDERS MERCHANTS
FOR BUILDING, PLUMBING, HANDYPERSON SUPPLIES AND FRIENDLY ADVICE
DELIVERIES TO YOUR DOORSTEP
BUILDING WORKS
DAMP PROOFING
TIMBER TREATMENT
46 RICHMOND RD MONTPELIER