

First - and last!



A milestone has been reached - the launch of Montpelier Pages! You should receive one with this newsletter and we hope you find it useful, keep it by the phone and refer to it first!

This is also the last issue for the present of this newsletter. But there is no need to be out of touch. Montpelier Conservation Group is planning to replace the newsletter with a brand new **noticeboard**, which will be sited at the bottom of Picton Street.

We hope it will keep everyone up-to-date with planning applications, issues, news and future events.

The monthly meetings of the group continue - but they will now take place on the **third Monday of the month**, commencing with May 16 (still at 7.30pm at The Brew House, Stokes Croft). This change is to avoid clashes with bank holidays which we have found in the past. These meetings are open to all, and you are welcome to join the group. The May 16 meeting will focus on proposals for **Sussex Place junction**.

The publications and the meeting dates may be changing, but the work of the Conservation Group continues as before. In case you were wondering what that was, look on the back page!

.....
Montpelier Conservation Group is concerned with all local issues and meets on the **third Monday of every month** (from May 94) at **The Brew House, Stokes Croft** - all welcome! Montpelier Conservation Group may also be contacted via writing to Montpelier Conservation Group, PO Box 969, Bristol BS99 1ZH.

Are you a business within Montpelier?

Montpelier Traders Association exists -

- to promote interaction between local businesses
- to provide support for local traders
- to promote the area city-wide
- to advertise jointly
- to plan for the future

The Association is for all areas of business - retail, manufacturing, service, leisure, whatever - and is looking for new members. If you are interested please

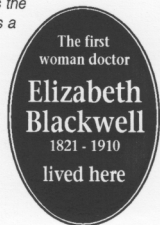
DATES FOR YOUR DIARY

May 15 Elizabeth Blackwell plaque unveiling

Elizabeth Blackwell was the first woman to qualify as a doctor and lived at 1 Wilson Street, St Paul's, during her childhood.

This plaque will be unveiled there by the Medical Women's Federation on Sunday May 15 at 11.30am. Why not come along?

There will be also an exhibition on view about her life.



May 16 MCG meeting with special reference to **Sussex Place/Ashley Road junction proposal**

Avon wishes to make changes to this junction, having previously promised consultation on a number of options, at least one of which would allow all existing buildings to remain undisturbed. Come to the meeting with your suggestions - the consultation ends in June.

May 20 Recycling collection from 8am

June 17 Recycling collection from 8am

June 20 MCG meeting AGM

July 15 Recycling collection from 8am

July 18 MCG meeting

Ad infinitum - now see noticeboard!

MCG meetings are on the third Monday of every month, recycling kerbside collection is on the third Friday of every month.

Community Policing: for Montpelier and St Werburghs, there is now a team of six community policemen - including PC Richard Hill, who many people will already know.

BELL'S DINE Dine locally! Only £12 for 3 courses Also à la carte
 1 YORK ROAD

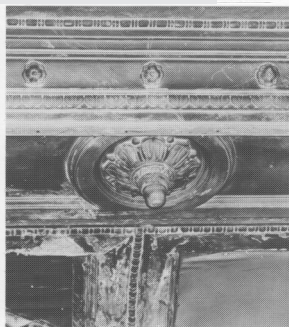
DEMBO THE INDEPENDENT ESTATE AGENT
 Specialist in property in Montpelier, St Werburghs, St Pauls and St Agnes
 If you are thinking of buying or selling

The **Bristolian Café** is under new management... but keeping all the good things and adding some new ones!
 Monday to Thursday 8.30 - 5.00 Friday/Saturday 8.30 - 8.30 Sunday 9.30 - 3.00
 2 PICTON STREET

Keep that car in tune at **RICHMOND MOTORS**
 Richmond Road
 for servicing, electronic tuning, MOTs and repairs on all makes of car
 MOTs now have exhaust checks

Keep your house in order with **LAURENCE**
ELECTRICAL, PLUMBING & HEATING SERVICES
 SPECIALIST CONTRACTORS AND ENGINEERS

Recognise it? This is the domed ornamental plasterwork ceiling of an outbuilding on the Full Marks Site. We have no record of the building's use. Was it a cinema?



Conservation in Montpelier

Living in a Conservation Area has many attractions - it also carries responsibilities. A small change to a building can alter the quality of the building or even the whole street.

An application for planning permission must be made for certain works which affect the character of a building in a Conservation Area. Listed Building Consent must also be sought for any works to the interior or exterior of a Listed Building or to structures within its boundary.

Before carrying out works to your building, these are some of the points to consider -

The visual weight and pattern of window frames and glazing bars are critical. Original windows should be repaired and retained where possible.

Old shopfronts of traditional design should be retained. Shutters always require planning consent.

Traditional materials should be cleaned, repaired, replaced - but not painted or faced by modern materials.

Much of the character of an historic building comes from the original form and covering of its roof.

Satellite dishes may not be located on a wall or roof facing a highway unless planning permission has been obtained.

Panelled solid timber doors are often stronger than many modern replacement doors.

Chimney stacks and pots are an important feature of the skyline.



PLANNING Update

We endeavour to be accurate at the time of going to press, but cannot guarantee it. Check details at Bristol Planning Department.

There are planning applications in for:

- Westmorland House, The Carriageworks and 4 Ashley Road - renewal of previous permission for 63 flats, plus offices
 - 1-13 St Paul Street - refurbish No1, demolish remainder, rebuild with facades in facsimile
 - 143 Ashley Road - remove K6 telephone kiosk from outside No. 143 and replace by public payphone KX100
 - Unit 6 Ashley Trading Estate (John Sheppards) - open storage in car park
 - 24 Sussex Place - alter front and rear
 - 40 Picton Street - from 3 flats to 2 maisonettes
 - 102 York Road - various tree works
 - Summers Road/Conduit Road - 9 flats and 12 houses
 - 2 Sussex Place - partial demolition (retro)
 - 3 Richmond Road - prune lime tree
 - 8 Picton Street - from office to flat
 - 38 Bath Buildings - from 3 flats to 2 maisonettes
 - 50-52 Bath Buildings - from 6 flats to 2 maisonettes and 2 flats
 - 61 Cobourg Road - tree works
 - 69 Stokes Croft - part demolition of flank wall
 - 1 & 3A Ashley Road and 110-116 Cheltenham Road - partial demolition (retrospective)
 - 152 Ashley Road - shop to dental surgery
- Approvals have been given for:
- 24/32 Wilson Street - 9 maisonettes, 9 flats
 - Lloyds Bowmaker - window guard rails
 - 164 Cheltenham Road - 7 terraced houses
 - 87 Ashley Road - work to 3 Prunus trees
 - 119 Ashley Road - 2 maisonettes and 4 flats
 - 17 Fairfield Road - day nursery
 - 63A Sussex Place - flat to doctor's surgery
 - 118 Richmond Road - 2 flats plus maisonette
 - 60 York Road - fell trees and replace
 - 31 Fairfield Road - maisonette and flat
 - 137 York Road - tree works

Refusal has been given for:

- 39 Fairfield Road - maisonette and flat
 - Magpie Shop, 7 Ashley Road - non-illuminated sign advertising church (retro)
- The following has been withdrawn:
- 110 Richmond Road - 2 flats + maisonette (confirmation of existing use)

What does Montpelier Conservation Group do?

These are *some* of our aims and *some* of the ways (not always successfully) in which we endeavour to fulfil them:

To conserve and enhance the character of the Montpelier Conservation Area and its environs. We have obtained grants to restore the lamp at the top of St Andrews Road, organised the 'Goodbye to Graffiti' scheme and have supported moves to reduce commuter traffic going through. We are trying to extend the boundary to cover all the area within the main roads and the railway line. We are also interested in the development of St Paul's and Stokes Croft.

To protect its historic buildings and features. We send a representative to the Conservation Advisory Panel each month to advise on local buildings, we send a response to the draft local plan, we speak at inquiries and so on.

To consider new developments and encourage appropriate proposals of a high standard. We keep an eye on new applications (and developments without permission) and try to obtain the best solutions for the sites.

To promote an awareness of the environment within the community. Open monthly meetings, newsletters, educational walks, leaflets, exhibitions, talks, promoting recycling... the list goes on. We also liaise with local schools, councillors, police and other groups.

RICHMOND BUILDERS MERCHANTS
 Keep it in the area!
 We have a stock of recyclable materials - from doorknobs to roof tiles
 DELIVERIES TO YOUR DOORSTEP 46 RICHMOND RD MONTPELIER